

# ANANDA CHANDRA COLLEGE

AFFILIATED TO UNIVERSITY OF NORTH BENGAL



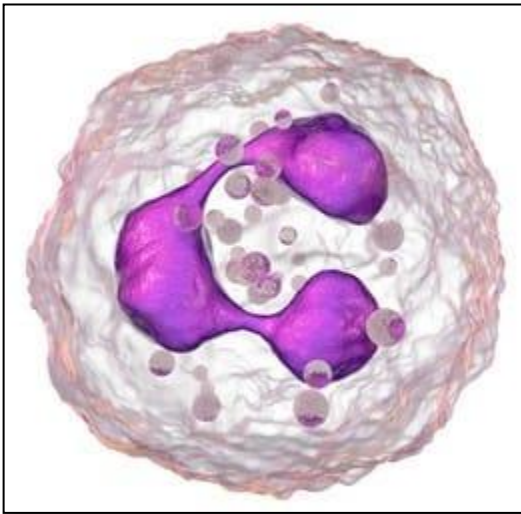
## Department of Zoology

6<sup>th</sup> Semester Practical Examination

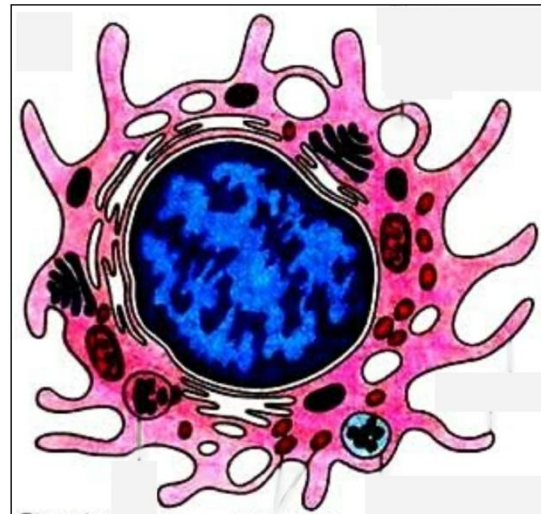
Paper-DSE-Paper-2 (Group-A)  
Immunology

Full Marks-20  
Time- 2 Hrs

1. Write the principal and procedure for determination of ABO blood group. (5)
2. Identify the following Leukocytes with reasons. (5X2=10)



a.



b.

3. Identify the following histological section with reason. (5X1=5)

