



UNIVERSITY OF NORTH BENGAL
Practical Exam 2020, Part-II(General)

Sub: Zoology Paper-VI

Full Marks: 50

A. Identify with proper characters of the disarticulated skeleton of animal. (4X5=20)

(I)



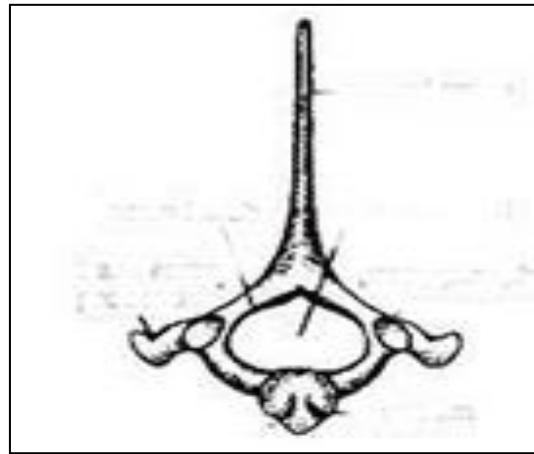
(II)



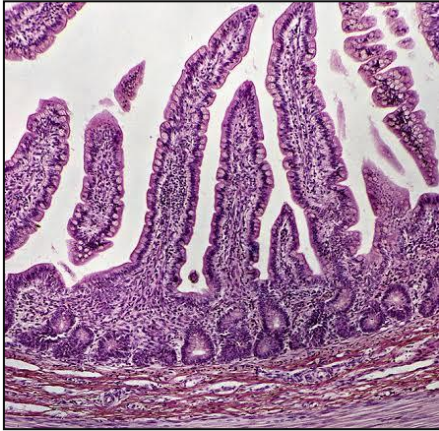
(III)



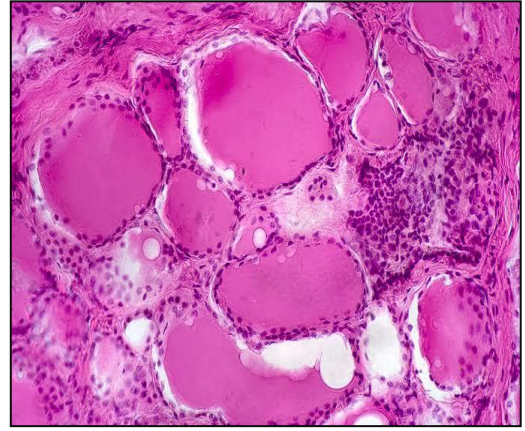
(IV)



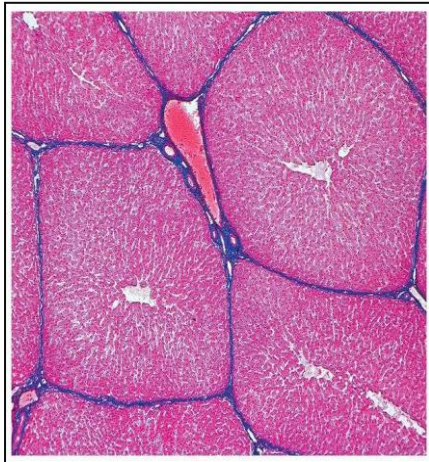
B. Identify with proper characters of the histological section of animal. (4X5=20)



(I)



(II)



(III)



(IV)

C. What is average value? Write a note about mean, media and mode. What are the limitation of arithmetic mean? (2+6+2=10)
